

Compresor
Código de tensión : FZ

AE4425Y-FZ1A

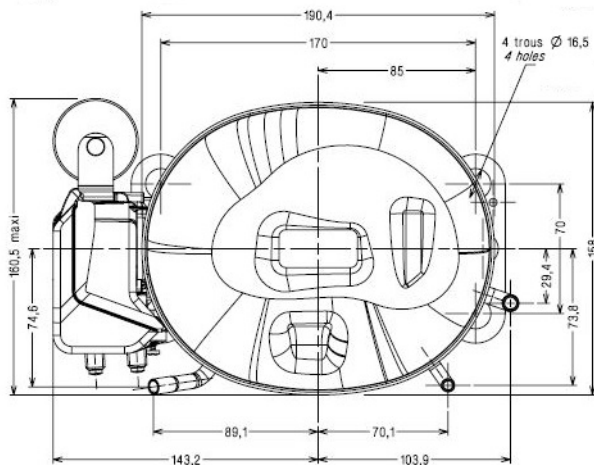
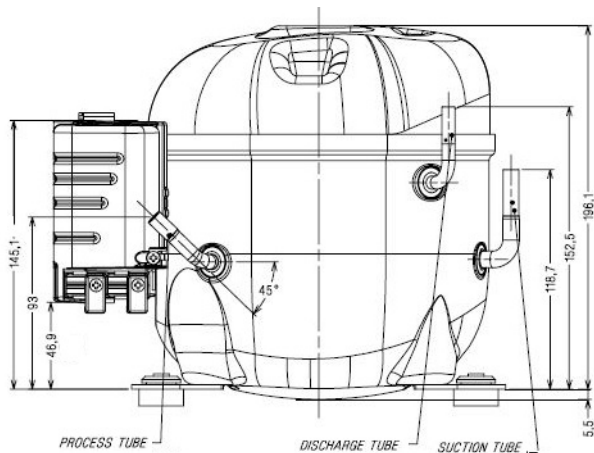
Frío Comercial Positivo (HP)

220 - 240V 1~ 50 Hz

R134a / R513A

AE4425Y-FZ1A

| Condiciones | Frecuencia | Potencia frigorífica nominal | | Potencia sonora ISO3745 / ISO 3743-1 |
|---------------------|------------|------------------------------|-------|---|
| | | Watts | BTU/h | |
| EN12900_MHP / R134a | 50 Hz | 291 | 994 | 50 dBA |
| EN12900_MHP / R513A | 50 Hz | 310 | 1057 | 50 dBA |



* EN12900_MHP : T°Cond. 45.0°C / T°Evap. -10.0°C / T°Gases Aspirados. 20.0°C
T°Subenfriamiento. 0.0K

Homologaciones :



| | |
|---------------------------------------|------------------------------|
| Cilindrada (cc) | 6,69 |
| Peso neto (kg) | 9.1 |
| Cantidad de aceite (cc) | 280.0 |
| Tipo de aceite | P.O.E |
| Expansión | Capilar/regulador de presión |
| Enfriamiento | Ventilado |
| Fase principal (Ohm) | 12.85 |
| Fase auxiliar (Ohm) | 27.56 |
| Intensidad | |
| Nominal (A) | 1.65 |
| De arranque (A) | 10.5 |
| Tipo de componentes eléctricos | CSIR |
| Protector | T89009 |
| Temporización | 6.5s - 16s / 7.00 A |
| Temperatura de apertura | 135° C |
| Temperatura de cierre | 52° C |
| Condensador de arranque | 64 µF / 250 V |
| Relé de intensidad | RP36** |
| Activación | 4.35A |
| Desactivación | 3.7A |
| Diámetro exterior del tubo | |
| Ø del tubo de aspiración | 6.35 (1/4") |
| Ø del tubo de descarga | 4.76 (3/16") |
| Ø del tubo de carga | 6.35 (1/4") |



Tecumseh

| | |
|---------------------|---|
| AE4425Y-FZ1A | Tension FZ : 220 - 240V 1~ 50 Hz |
|---------------------|---|

Les performances sont données dans les **conditions EN12900_MHP** :
 Condition Dew
 The performance data are in **EN12900_MHP conditions** :
 Dew Condition

Gaz aspirés : 20.0 °C
 Sous refroidissement : 0.0 K
 Return gas : 20.0 °C
 Subcooling : 0.0 K

| 50 Hz R134a | | | | | | | | | | | |
|--------------------|--------------------|--------|------|------|------|------|------|------|------|------|------|
| N°3025 | | | | | | | | | | | |
| 4 T condensation | 5 T évaporation | (°C) | -25 | -20 | -15 | -10 | -5 | 0 | 5 | 10 | 15 |
| 30 | 1 P frigorifique | (Watt) | 136 | 200 | 275 | 365 | 470 | 593 | 735 | 899 | 1087 |
| | 2 P absorbée | (W) | 135 | 149 | 161 | 172 | 182 | 191 | 199 | 207 | 214 |
| | 3 I absorbée | (A) | 1.21 | 1.24 | 1.27 | 1.29 | 1.32 | 1.34 | 1.36 | 1.38 | 1.40 |
| 40 | 1 P frigorifique | (Watt) | 104 | 165 | 236 | 317 | 411 | 520 | 645 | 790 | 955 |
| | 2 P absorbée | (W) | 135 | 153 | 171 | 186 | 201 | 214 | 227 | 238 | 250 |
| | 3 I absorbée | (A) | 1.18 | 1.23 | 1.28 | 1.33 | 1.38 | 1.42 | 1.47 | 1.51 | 1.55 |
| 50 | 1 P frigorifique | (Watt) | | 128 | 193 | 265 | 348 | 443 | 552 | 676 | 819 |
| | 2 P absorbée | (W) | | 153 | 176 | 197 | 217 | 236 | 254 | 271 | 288 |
| | 3 I absorbée | (A) | | 1.22 | 1.29 | 1.36 | 1.43 | 1.50 | 1.57 | 1.63 | 1.70 |
| 60 | 1 P frigorifique | (Watt) | | | 148 | 213 | 284 | 365 | 456 | 561 | 680 |
| | 2 P absorbée | (W) | | | 179 | 207 | 233 | 258 | 283 | 306 | 329 |
| | 3 I absorbée | (A) | | | 1.29 | 1.39 | 1.48 | 1.58 | 1.67 | 1.75 | 1.84 |

| 50 Hz R513A | | | | | | | | | | | |
|--------------------|--------------------|--------|------|------|------|------|------|------|------|------|------|
| N°3165 | | | | | | | | | | | |
| 4 T condensation | 5 T évaporation | (°C) | -25 | -20 | -15 | -10 | -5 | 0 | 5 | 10 | 15 |
| 30 | 1 P frigorifique | (Watt) | 156 | 226 | 305 | 396 | 501 | 620 | 755 | 908 | 1080 |
| | 2 P absorbée | (W) | 151 | 164 | 175 | 185 | 194 | 204 | 214 | 226 | 241 |
| | 3 I absorbée | (A) | 1.34 | 1.36 | 1.37 | 1.38 | 1.40 | 1.43 | 1.47 | 1.51 | 1.58 |
| 40 | 1 P frigorifique | (Watt) | 118 | 183 | 257 | 340 | 435 | 542 | 663 | 801 | 955 |
| | 2 P absorbée | (W) | 147 | 167 | 184 | 198 | 212 | 226 | 239 | 254 | 271 |
| | 3 I absorbée | (A) | 1.29 | 1.34 | 1.38 | 1.42 | 1.46 | 1.50 | 1.55 | 1.61 | 1.68 |
| 50 | 1 P frigorifique | (Watt) | | 140 | 206 | 279 | 362 | 456 | 561 | 681 | 816 |
| | 2 P absorbée | (W) | | 163 | 187 | 209 | 229 | 248 | 266 | 285 | 306 |
| | 3 I absorbée | (A) | | 1.30 | 1.37 | 1.44 | 1.51 | 1.58 | 1.64 | 1.72 | 1.80 |
| 60 | 1 P frigorifique | (Watt) | | | 157 | 219 | 288 | 366 | 454 | 554 | 667 |
| | 2 P absorbée | (W) | | | 187 | 217 | 244 | 270 | 295 | 320 | 346 |
| | 3 I absorbée | (A) | | | 1.36 | 1.46 | 1.56 | 1.65 | 1.74 | 1.83 | 1.93 |

1 = cooling capacity 2 = power input 3 = current 4 = condensing temperature 5 = evaporating temperature

Nota : Tecumseh se réserve le droit de modifier les informations contenues dans ce document sans préavis.

Note : Tecumseh reserves the right to change information contained in this document without notification.

© 2021 Tecumseh Products Company
All rights reserved