




**APPROVALS**




 **ENGINEERING CODE**  
668NA9012AA


 **APPROVED REFRIGERANT**  
R134a

 **POWER SUPPLY**  
220 - 240V 50Hz ~

 **STANDARD CONDITIONS**  
EN13215\_RG20

 **APPLICATION**  
M/HBP

 **COOLING CAPACITY**  
841 W

 **EFFICIENCY**  
1.66 W/W

DATA

**General Data**

<b>Weight</b>	20.6 Kg
<b>Height</b>	296 mm
<b>Length</b>	465 mm
<b>Width</b>	340 mm
<b>Power Supply</b>	220 - 240 V 50 Hz

**Electrical Data**

<b>Motor Type</b>	CSIR
<b>Locked Rotor Amperage (LRA)</b>	22 A
<b>Max Current</b>	4.63 A

**Spare Parts**

<b>Condenser</b>	3R11T	2451206
<b>Fan Kit</b>	16W 254/28/5B	1996579
<b>Compressor</b>	NEU6214Z	269NA51..AN
<b>Electrical Kit</b>	ELKOM NEU6214Z	269NA51M1A

## Fan Motor

Number	1
Shaft Power	16 W
Air Flow	595 m <sup>3</sup> /h
Blade diameter	254 mm

### PERFORMANCE

## Rated Points

Ambient Temperature	Cooling Capacity	Power Consumption	Current	Efficiency
32.00°C	841 W	508 W	3.52 A	1.66 W/W

Test Condition EN13215\_RG20: Evaporating temp. -10.00°C, Ambient temp. 32.00°C, Return Gas 20 °C, Subcooling 3K

## Performance Curve Data

### Ambient Temperature 25°C

Evaporating Temperature °C	Cooling Capacity W	Power Consumption W	Current A	Efficiency W/W
-15	699	448	3.35	1.56
-10	870	502	3.5	1.73
-5	1054	565	3.7	1.86
0	1249	639	3.94	1.96
5	1458	722	4.24	2.02
10	1680	816	4.59	2.06

Test Condition EN13215\_RG20: Evaporating temp. -10.00°C, Ambient temp. 25.00°C, Return Gas 20 °C, Subcooling 3K

### Ambient Temperature 32°C

Evaporating Temperature °C	Cooling Capacity W	Power Consumption W	Current A	Efficiency W/W
-15	676	452	3.37	1.49
-10	841	508	3.52	1.66
-5	1020	573	3.72	1.78
0	1213	648	3.97	1.87
5	1421	734	4.28	1.94
10	1643	830	4.64	1.98

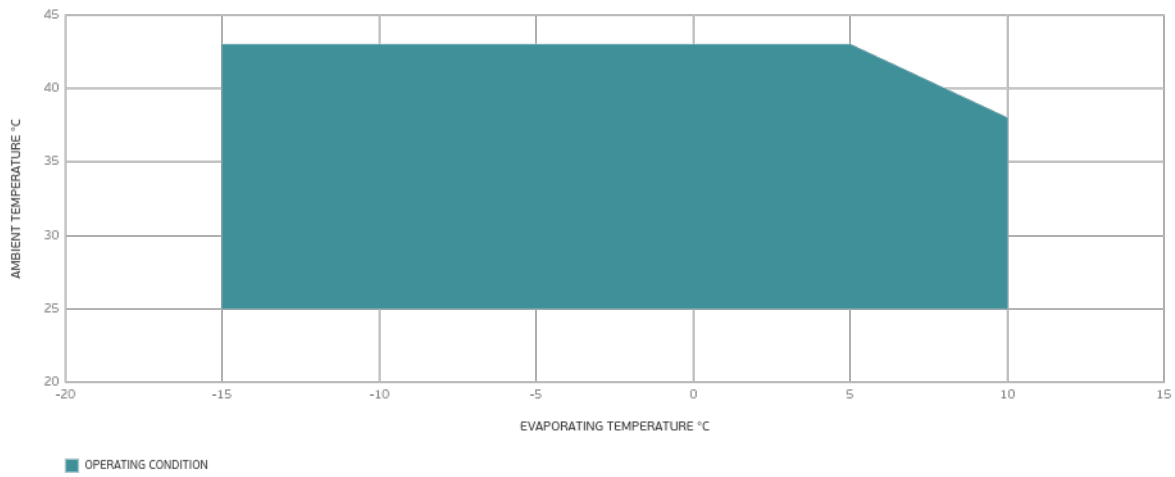
Test Condition EN13215\_RG20: Evaporating temp. -10.00°C, Ambient temp. 32.00°C, Return Gas 20 °C, Subcooling 3K

## Ambient Temperature 43°C

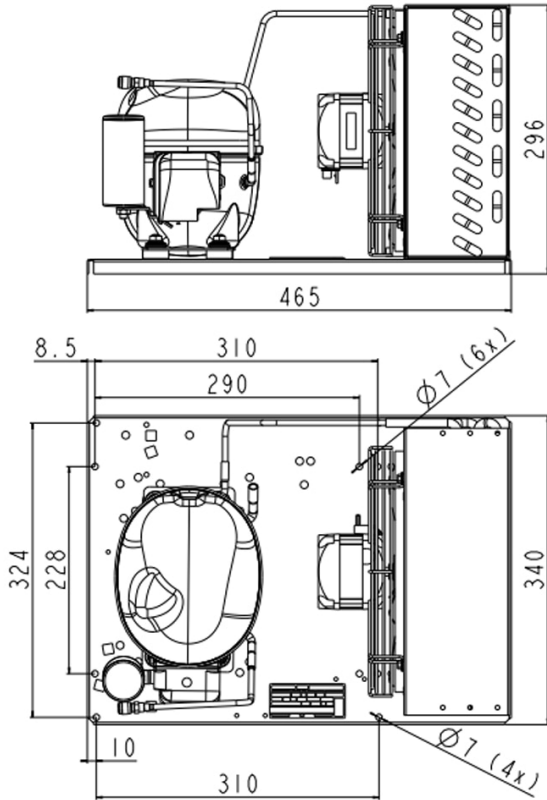
Evaporating Temperature °C	Cooling Capacity W	Power Consumption W	Current A	Efficiency W/W
-15	548	477	3.41	1.15
-10	693	537	3.58	1.29
-5	855	609	3.81	1.4
0	1033	691	4.1	1.5
5	1228	783	4.45	1.57
10	1441	887	4.86	1.63

Test Condition EN13215\_RG20: Evaporating temp. -10.00°C, Ambient temp. 43.00°C, Return Gas 20 °C, Subcooling 3K

## Operating Envelope



## External Dimensions



## Wiring Diagram

