



APPROVALS



 **ENGINEERING CODE**
668IA8212AA

 **APPROVED REFRIGERANT**
R452A

 **POWER SUPPLY**
220 - 240V 50Hz ~

 **STANDARD CONDITIONS**
EN13215_SH10

 **APPLICATION**
M/HBP

 **COOLING CAPACITY**
618 W

 **EFFICIENCY**
1.51 W/W

DATA

General Data

Weight	21 Kg
Receiver	1.2 L
Height	296 mm
Length	465 mm
Width	340 mm
Power Supply	220 - 240 V 50 Hz

Electrical Data

Motor Type	CSIR
Locked Rotor Amperage (LRA)	16 A
Max Current	3.11 A

Spare Parts

Condenser	3R11T	2451206
Fan Kit	16W 254/28/5B	1996579
Valve Suction	FLARE 3/8"	2110059
Valve Discharge	FLARE 1/4"	2110085
Compressor	NEU6210GK	958IA51..AN
Electrical Kit	ELKOM NEU6210GK	958IA51M1A

Noise Data

Sound Power Level	65.1 dB (A)	-	-
Sound Pressure Level	at 1 m	at 5 m	at 10 m
	57.1 dB (A)	43.1 dB (A)	37.1 dB (A)

Fan Motor

Number	1
Shaft Power	16 W
Air Flow	595 m ³ /h
Blade diameter	254 mm

PERFORMANCE

Rated Points

Ambient Temperature	Cooling Capacity	Power Consumption	Current	Efficiency
32.00°C	618 W	409 W	2.87 A	1.51 W/W

Test Condition EN13215_SH10: Evaporating temp. -10.00°C, Ambient temp. 32.00°C, Return Gas 0 °C, Subcooling 3K , Superheating 10K

Performance Curve Data

Ambient Temperature 25°C

Evaporating Temperature °C	Cooling Capacity W	Power Consumption W	Current A	Efficiency W/W
-20	445	335	2.51	1.33
-15	570	364	2.63	1.57
-10	693	399	2.75	1.74
-5	825	438	2.89	1.88
0	978	478	3.03	2.05
5	1164	517	3.16	2.25
10	1393	551	3.27	2.53

Test Condition EN13215_SH10: Evaporating temp. -10.00°C, Ambient temp. 25.00°C, Return Gas 0 °C, Subcooling 3K , Superheating 10K

Ambient Temperature 32°C

Evaporating Temperature °C	Cooling Capacity W	Power Consumption W	Current A	Efficiency W/W
-20	387	348	2.7	1.11
-15	503	375	2.77	1.34
-10	618	409	2.87	1.51
-5	746	447	2.99	1.67
0	897	486	3.11	1.85
5	1082	524	3.24	2.07
10	1314	557	3.37	2.36

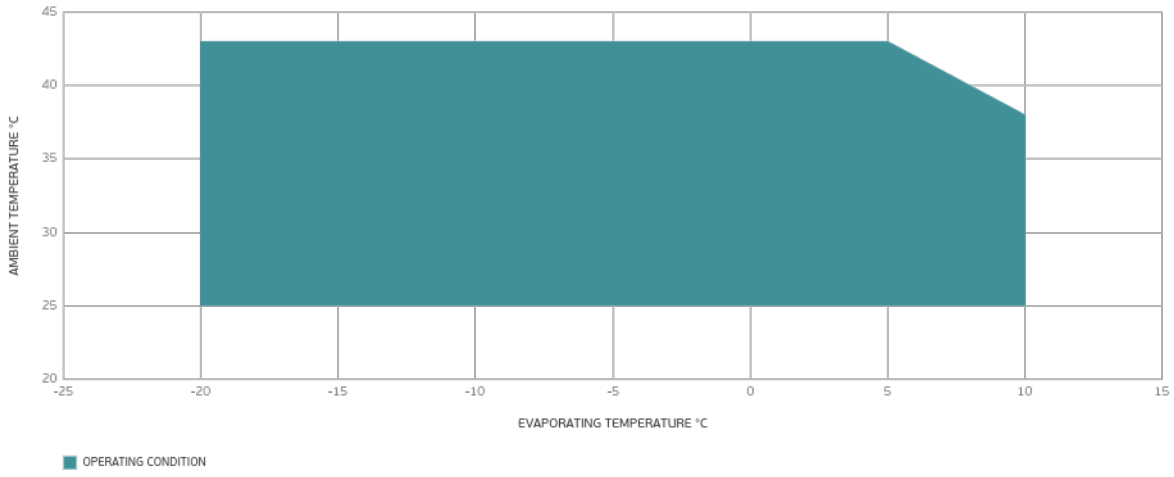
Test Condition EN13215_SH10: Evaporating temp. -10.00°C, Ambient temp. 32.00°C, Return Gas 0 °C, Subcooling 3K , Superheating 10K

Ambient Temperature 43°C

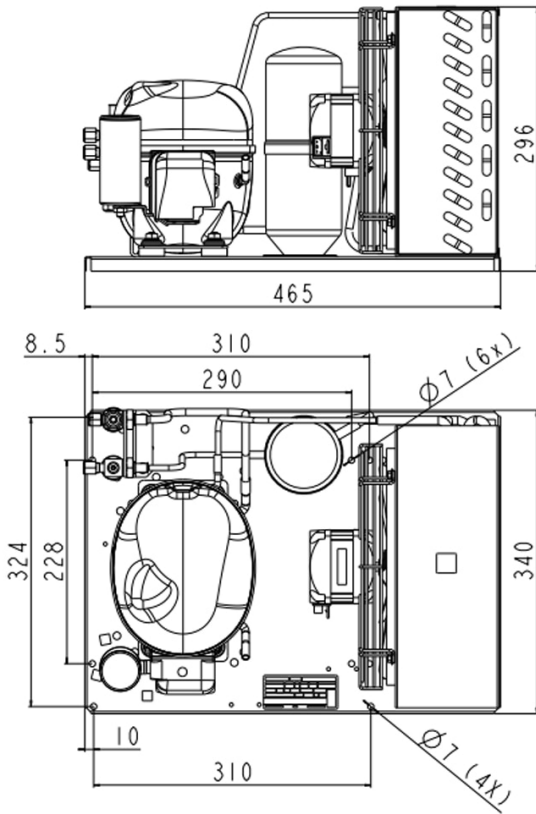
Evaporating Temperature °C	Cooling Capacity W	Power Consumption W	Current A	Efficiency W/W
-20	287	361	2.64	0.8
-15	384	393	2.73	0.98
-10	485	432	2.86	1.12
-5	602	476	3.02	1.27
0	746	520	3.21	1.43
5	929	564	3.42	1.65
10	1163	604	3.64	1.93

Test Condition EN13215_SH10: Evaporating temp. -10.00°C, Ambient temp. 43.00°C, Return Gas 0 °C, Subcooling 3K , Superheating 10K

Operating Envelope



External Dimensions



Wiring Diagram

